

SIZING OF HGU55/P

1 SCOPE

This instruction serves as a guideline how to determine the correct size of the HGU55/P.

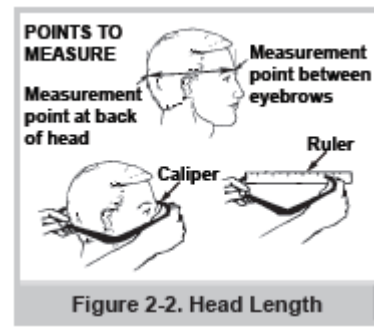
2 TOOLS

1. Sizing calliper or angle-hook and ruler

3 MEASUREMENTS

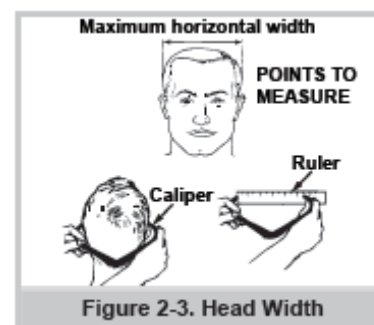
3.2 Head Length

1. Using a calliper and ruler, or one angle-hook and a ruler, holding the base of the angle ruler at the neck section and the ruler perpendicular
2. Measure head length at the hatband line (eyebrow line). Calipers and rulers should touch, but not indent the skin.
3. Document the measured value, and determine the correct size in the sizing table below.



3.1 Head Width

1. Using the caliper or angle hook and rule, measure the head width at the hatband line above the ear tips.
2. Document the measurement



3.2 Determine helmet size

Compare the measured head length and width with the sizing parameters shown in below table.

Notes:

- If the measurements falls into different size ranges, select the larger size
- These sizing parameters are just guidelines. At times, the next smaller or large size will be the most comfortable one.

Head Length Inch (mm)	Max Head Width Inch (mm)	Helmet Size
7.2 to 7.8 (183-198)	6.2 (157)	Medium
7.7 to 8.3 (195-211)	6.5 (165)	Large
8.2 TO 8.7 (208-221)	6.8 (173)	X-Large

SIZING OF HALP-MASK

4 SCOPE

This instruction serves as a guideline how to determine the correct size of the Gentex HALP mask.

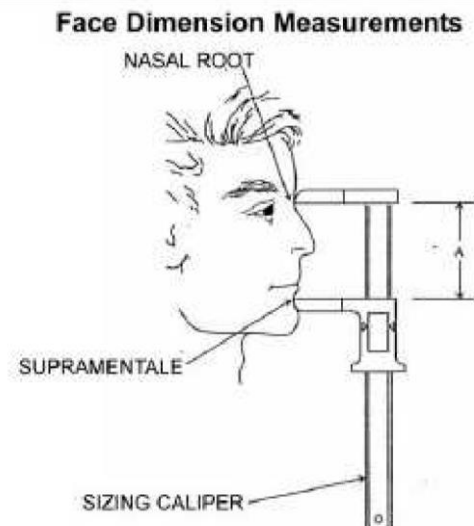
5 TOOLS

1. Sizing caliper

6 MEASUREMENTS

1. With the sizing calliper, measure the distance A between the suprmentale point below the lower lip and the nasal root as shown in the picture below.
2. With help of the sizing table below, determine the correct size of the mask

MASK SIZE	FACE LENGTH (A)
Extra Small Narrow	Less than 84mm
Small Narrow	84mm to 87mm
Medium Wide: Medium Narrow	87mm to 100mm
Large Wide	More than 100mm



//.